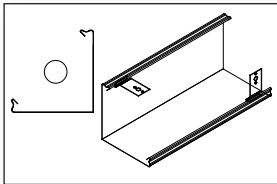


# ENCLOSURE IS FABRICATED TO ANY SIZE, ANY DIMENSION, FOR ANY SITUATION

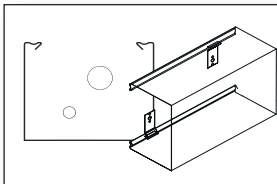
## EASY AS

### 1. SELECT THE PROFILE: SIZE OF THE PIPE DOESN'T MATTER

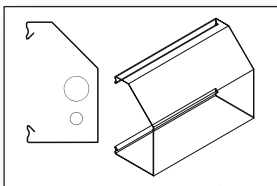
Choose the L-Shield profile when two sides of your pipe or mechanical need to be covered.



Choose the U-Shield profile when three sides of your pipe or mechanical need to be covered.



Choose the Slope-Top profile for aesthetic purposes or to discourage the use of the cover as a sitting area.



### 2. TELL US THE SIZE YOU NEED

Choose between 3" and 60" (H x W)

Height: \_\_\_\_\_

Width: \_\_\_\_\_

Height: \_\_\_\_\_

Width: \_\_\_\_\_

Overall Height: \_\_\_\_\_

Width: \_\_\_\_\_

### TELL US THE LENGTH YOU NEED

8'    10'

Other/Cut to Exact Length at \_\_\_\_\_'

Total Footage \_\_\_\_\_'

### 3. SELECT THE MATERIAL, GAUGE, COLOR AND ACCESSORIES YOU REQUIRE

All configurations can be manufactured in light to heavy-duty 24-16 Gauge A60/G90 Galvannealed Steel, Stainless Steel or .050 Aluminum to accommodate any installation requirement.

24 Gauge    20 Gauge    16 Gauge  
(22 and 18 gauge can be quoted)

304 Stainless Steel    .050 Aluminum

### TELL US THE FINISH/COLOR YOU'D LIKE

Sherwin Williams epoxy hybrid powder coating in colors:

Pure White    Dover White

Off White    Antique White

Anti-Microbial, Pure White

Zinc-Galvannealed (Unfinished - Field Paint)

White Primer

Stainless Steel, #4 Finish

### TELL US ABOUT THE ACCESSORIES YOU REQUIRE

Coupling Qty. \_\_\_\_\_ Size(s) \_\_\_\_\_  
(used to join each lineal length together in excess of 10')

Wall Flange Qty. \_\_\_\_\_ Size(s) \_\_\_\_\_  
(used at the beginning and end of each run)

End Cap Qty. \_\_\_\_\_ Size(s) \_\_\_\_\_  
(used to cap-off open end runs)

Access Panel Qty. \_\_\_\_\_ Size(s) \_\_\_\_\_  
(allows for access to pipe or mechanicals)

### CUSTOM SHAPES AND PROFILES AVAILABLE

## TELL US ABOUT YOURSELF AND YOUR PROJECT

Name: \_\_\_\_\_

Company name: \_\_\_\_\_

Address: \_\_\_\_\_

Phone: \_\_\_\_\_

Email: \_\_\_\_\_

Type of project (i.e., fire protection, HVAC, electrical, other): \_\_\_\_\_

Project name: \_\_\_\_\_

When needed/bid date: \_\_\_\_\_

Project completion date: \_\_\_\_\_

Project location: \_\_\_\_\_

Plans/drawings available:  Yes    No

Call 888.933.2248  
Email [sales@jgius.com](mailto:sales@jgius.com) or  
learn more at [www.JGIUS.com](http://www.JGIUS.com)

